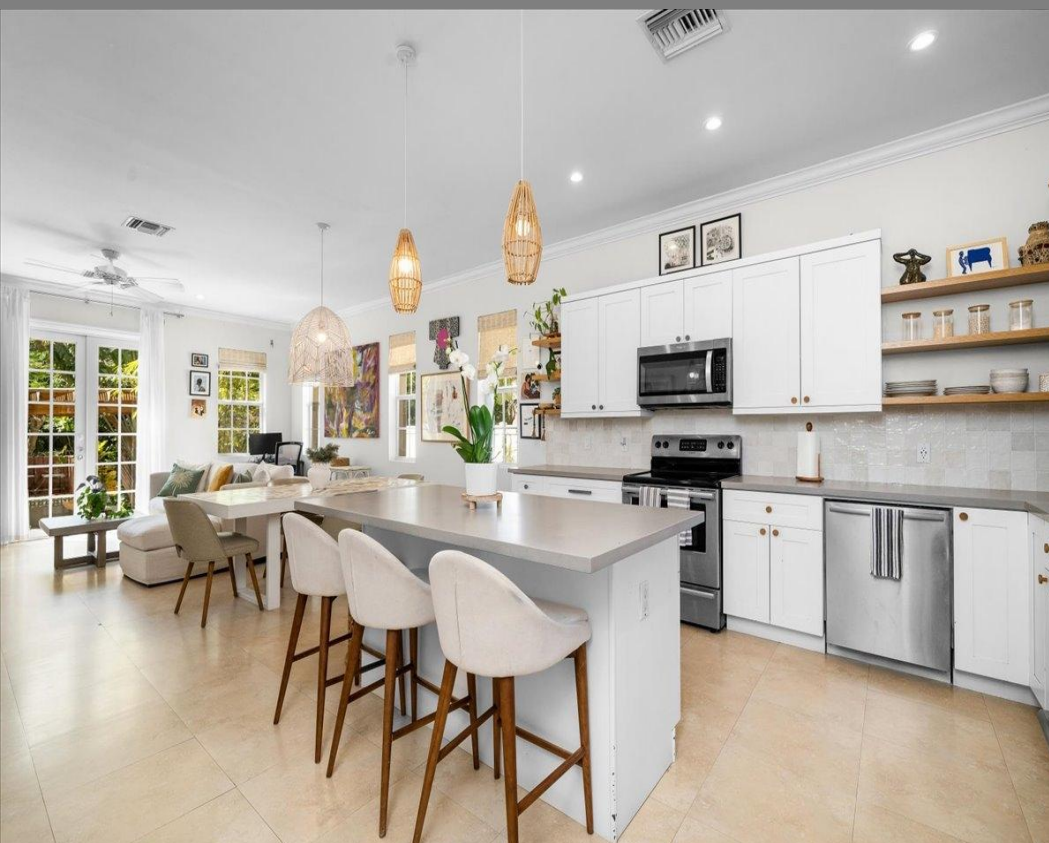


Prospect Ridge, Nassau / New Providence

REF#57114

**COLDWELL
BANKER**

**LIGHTBOURN
REALTY**



LOT SIZE
1400



SQ. FT.
1400



BEDS
2



BATHS
3

\$4,500

Location: Prospect Ridge, Nassau / New Providence

Amenities: Garden Area, Kitchen Built-in(s), Impact Shutters, Roll Down Shutters, Cable, Stand-by Generator, 24.

Summary: This Balmoral 2 bed, 2 bath town-home has been recently renovated with an upgraded kitchen, bathrooms and an outdoor covered pergola with a built in BBQ. The unit features a central A/C system with a Nest Thermostat, upgraded plumbing system with a pressure boost pump, additional outdoor storage, and shares a standby generator with the adjacent unit 49. Each bedroom features an en-suite as well as a powder room adjacent to the kitchen.

Office Listing

Nassau, Bahamas
Cell:
Email: sales@cbbahamas.com
cbbahamas.com



COLDWELL BANKER
LIGHTBOURN REALTY