

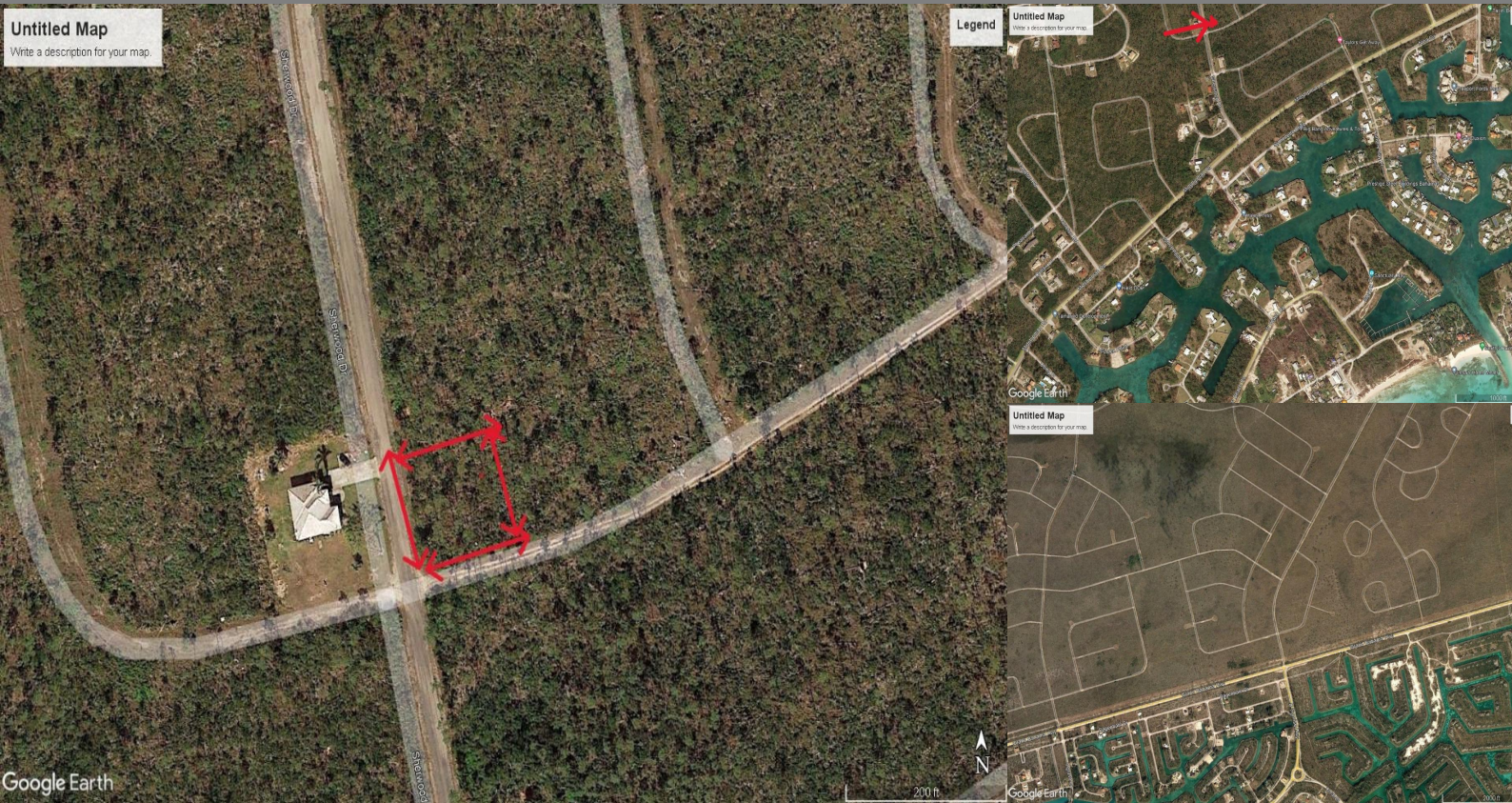
# Sherwood Forest, Grand Bahama

Single Family Vacant

REF#55671



LIGHTBOURN  
REALTY



LOT SIZE  
14000



SQ. FT.  
14000



BEDS  
0



BATHS  
0

\$32,000

Location: Sherwood Forest, Grand Bahama

Amenities: None.

Summary: Single family property about 1/3 of an acre with paved roads and all utilities in place just feet away off Mishipman. Excellent opportunity for building your dream house in the prestigious Lucaya area with shopping and entertainment in close proximity. For those interested there are two lots at Lycayan Estates that could be had with this property for a total of \$42K. These lots are very close to GB Highway and the location is at the intersection of GB Highway and Causarina Drive.

Office Listing

Nassau, Bahamas  
Cell:  
Email: sales@cbbahamas.com  
cbbahamas.com



COLDWELL BANKER  
LIGHTBOURN REALTY