

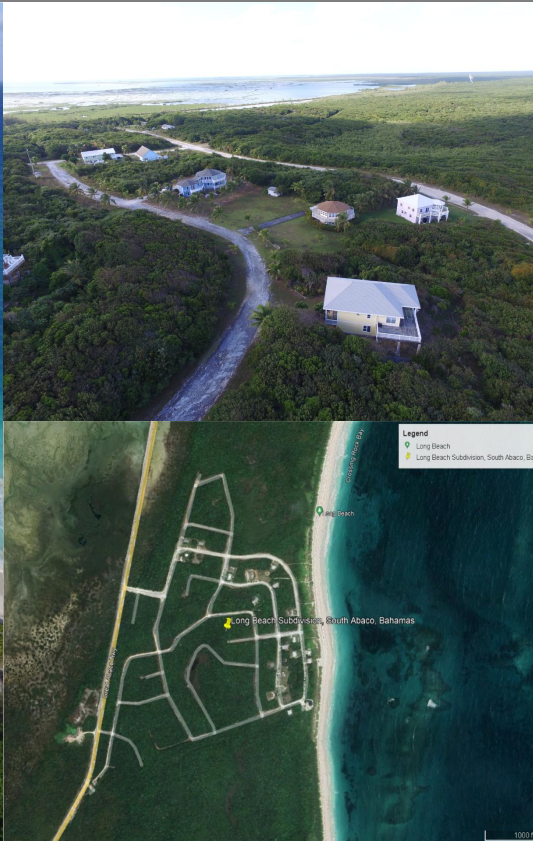
Long Beach, Abaco

Single Family Vacant

REF#55413



LIGHTBOURN
REALTY



LOT SIZE
2870000



SQ. FT.
0



BEDS
0



BATHS
0

\$9,950,000

Location: Long Beach, Abaco

Amenities: None,Adult Oriented,Central location,Easy Access,Family Oriented,Golf Course,Highway Access,Hillside.

Summary: VENDOR FINANCING AVAILABLE. Long Beach Subdivision â€” A DIAMOND IN THE ROUGH - Appropriately named, this existing approved subdivision sits on a section of 8+ miles of nonstop uninterrupted beach! The remaining developer owned homesites consist of 287 lots out of 440 and offer a variety of inland and elevated parcels. The Western side adjacent to Long Beach hosts an abundance of bone fishing grounds sought by many avid fishermen from all over the world. Long Beach is located in the southern part of Great Abaco Island and is roughly a 30-minute drive north on the Great Abaco Highway to the city of Marsh Harbour and Leonard Thompson International Airport. All of the homesites have the ability to be connected to nearby municipal power and water within the subdivision, with approximately 20 homes fully constructed of various architectural styles and designs. Be the 1st to take advantage of the great residential & untapped commercial development opportunities on the southern section of Abaco. A PRIME commercial business opportunity!!!!!!!!!!

Office Listing

Nassau, Bahamas
Cell:
Email: sales@cbbahamas.com
cbbahamas.com



COLDWELL BANKER
LIGHTBOURN REALTY