

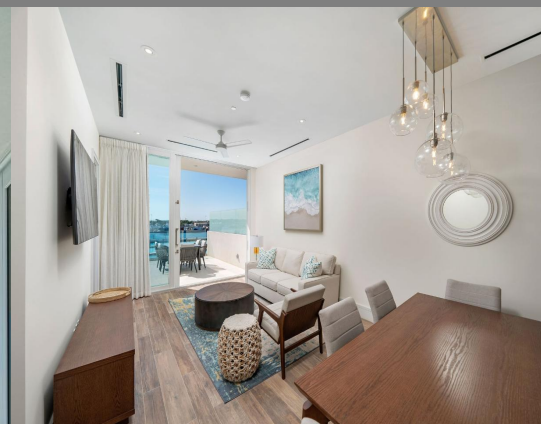
Paradise Island, Paradise Island

Condo/Townhouse

REF#56627

**COLDWELL
BANKER**

**LIGHTBOURN
REALTY**



LOT SIZE
1356



SQ. FT.
1356



BEDS
2



BATHS
2

\$1,395,000

Location: Paradise Island, Paradise Island

Amenities: Swimming Pool, Main Level Entry, Impact Windows, Stand-by Generator, 24 Hour Security, Furnished, Fam.

Summary: Indulge in awe-inspiring vistas of the Hurricane Hole Superyacht Marina and Nassau Harbour from this contemporary two-bedroom, two-bathroom condominium situated within Sterling Commons at Paradise Landing. Boasting modern elegance and island allure, this freshly built, tastefully furnished unit on the third floor epitomizes luxury living. From top-of-the-line appliances to quartz countertops, every detail exudes quality and style. Enjoy the convenience of central air conditioning, laundry facilities, and hurricane-rated doors leading to a spacious private balcony, perfect for soaking in the stunning views. Nestled within Paradise Island's premier luxury condominium community, Sterling Commons offers residents access to a dynamic lifestyle centered around a state-of-the-art super yacht marina. Experience the pinnacle of contemporary living in Paradise Landing, the vibrant new epicenter of Paradise Island. With pristine sandy beaches and crystal-clear waters just steps away, Paradise Island offers an idyllic escape. Explore nearby iconic destinations such as The Atlantis.

Office Listing

Nassau, Bahamas

Cell:

Email: sales@cbbahamas.com

cbbahamas.com



COLDWELL BANKER
LIGHTBOURN REALTY