

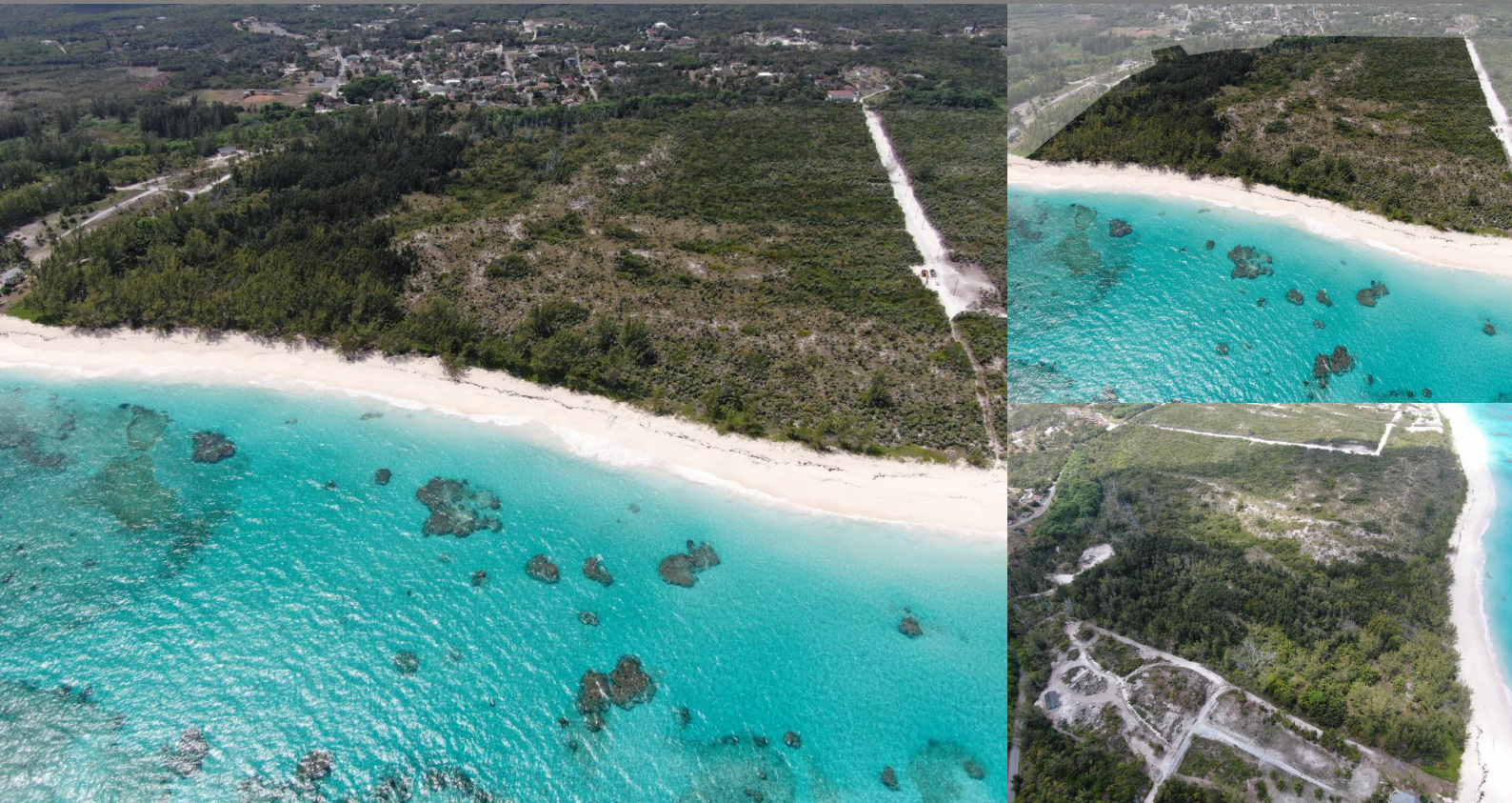
# Palmetto Point, Eleuthera

Single Family Vacant

REF#44467



LIGHTBOURN  
REALTY



LOT SIZE  
3659040



SQ. FT.  
0



BEDS  
0



BATHS  
0

\$9,000,000

Location: Palmetto Point, Eleuthera

Amenities: None,Central location,Easy Access,Golf Course,Ocean View,Shopping Nearby,Recreation Nearby,Ocean Fro.

Summary: Sunset Development is 84+/- acres of Prime, elevated, Atlantic waterfront land with 1700 +/- feet of stunning white sandy beach. The fabulous beach continues for miles in both north and south directions. This property is located in Palmetto Point, Eleuthera, Bahamas on Poponi Beach and the famous Banks Road and is a blank slate for a savvy developer. It would also be ideal for a resort site, condominium development, luxury villas or estate homes, or Lots. Utilities are located on the Road. Sunset Development is listed at a great price with the buyer in mind. From intimate resorts and friendly, affordable inns to ultra-luxurious oceanfront cottages, it is impossible to go wrong on Eleuthera, Harbour Island, and Spanish Wells. When you visit one, youâ€™™ want to visit the others. Each one has its own vibe and its own unique stories. The warmth of Eleuthera comes as much from the people who live there as it does from the sun above, and it's worth experiencing. It takes just 15 minutes to get to Eleuthera from Nassau and about one hour to arrive from South Florida.

Office Listing

Nassau, Bahamas  
Cell:  
Email: sales@cbbahamas.com  
cbbahamas.com



COLDWELL BANKER  
LIGHTBOURN REALTY